

## Declaration

Because of the upgrade edition of the product or other reasons, the accessories and the content of the operating methods of the manual will be renewed aperiodically. Unless other promise, the product specification and related information of the manual will just be regarded as the using guidance, any implying of law or hint of surety couldn't be constituted by all information or suggestions of the manual.

## Cautions

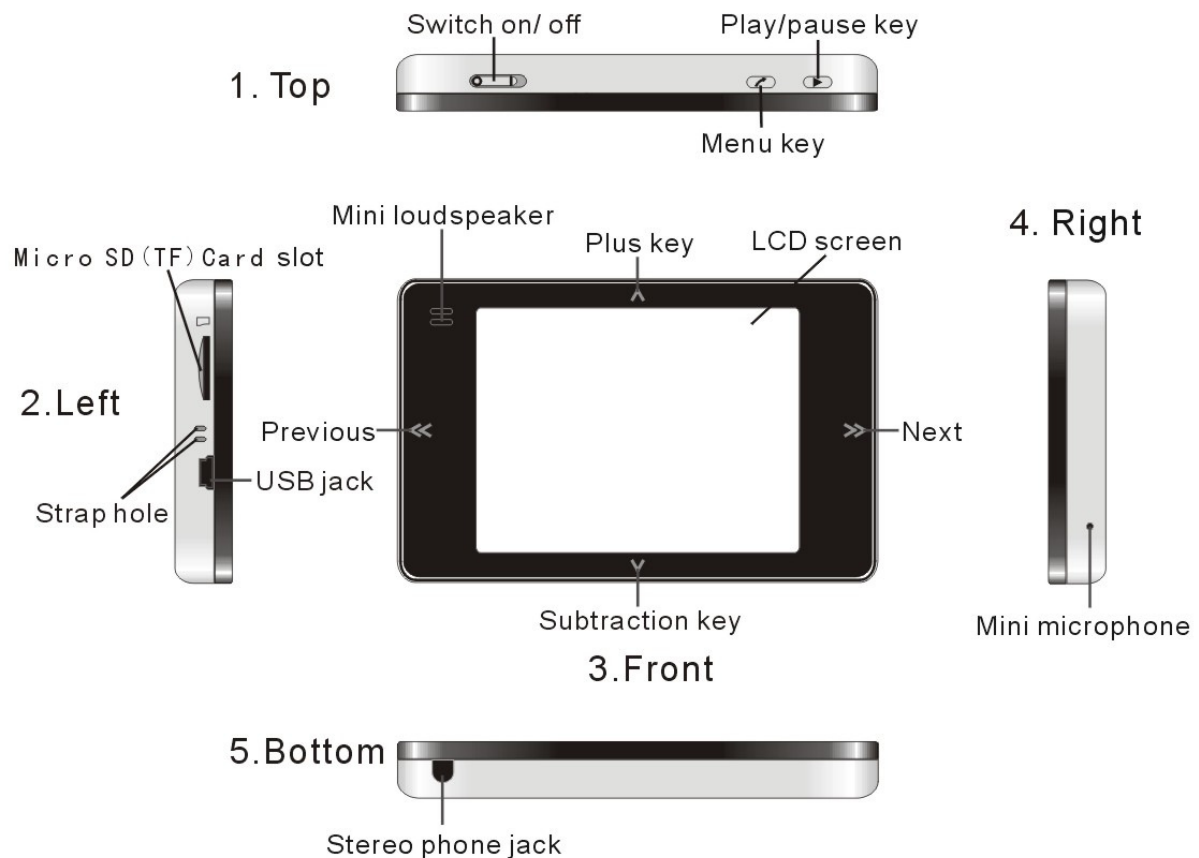
In order to give you better service and to ensure the correct use and maintenance of the product, please read the following product's information carefully. Please do not put it under the high temperature, under the sunshine directly, high humidity or dusty place (the suitable temperature is from 0°C to 40°C, and the humidity is from 10% to 75%). In case of it being fallen down or hit strongly, otherwise it may lead physics injure of the machinery. The using time should not be too long and the volume should be suitable, in case of causing tinnitus or slacking up of audition. Please don't tear it down by yourself; don't cleaning the surface by using alcohol, thinner or benzene. please don't use it in the occasion where the electrical equipment is forbidden to use, for example: on the air. please don't use it when driving a car or walking, in case of causing traffic accident. Our company have not responsibility for amends, if the damage of machine and data loss caused by incorrect operation, maintenance and storage (not according to the instruction of the manual). please contract us or franchiser if the fittings listed in the packing list have been mangled or omitted.

## Features

- Unique design, combining simplicity and **fashion**.
- **Nice and clear 2.83" QVGA** TFT 160,000,000-color screen integrates the best view and mobility.
- Ultra-thin main body with the thickest place measured **only 0.97** cm creates a peak in the industry.
- The cool user interface perfectly shows, "Just Myself".
- **RM/RMVB/FLV video format** convert , AVI Format 20~24 frame, full screen display, which makes the picture more clear and fluency.
- **The built-in 18-bit Sigma-delta audio** digital-to-analog converter featuring an s/n ratio of 90 dB is able to provide high-quality and professional audio effect.
- Support double non-damage **audio formats (APE、FLAC)**, with the professional audio decode ability to give you the real dynamic spectrum.
- Integrates radio, image viewer, text viewer, recorder, and other functions.
- Based on powerful chip calculation capability, multitasking can be realized easily.
- **With USB 2.0 high speed** PHY integrated, a super high USB data transmission speed is supported, allowing you to feel an extremely fast speed
- **MicroSD (TF)** -extended memory enables an unlimited capacity..
- The built-in super-micro speaker inherits human-oriented design concept.
- The integration of **AVC (automatic voltage control) system** enables super-low power consumption.

- Provides you with an incredibly long standby time with a new-generation polymer lithium ion battery applied.
- **Free upgrade of firmware** provides infinite space for the expansion of application

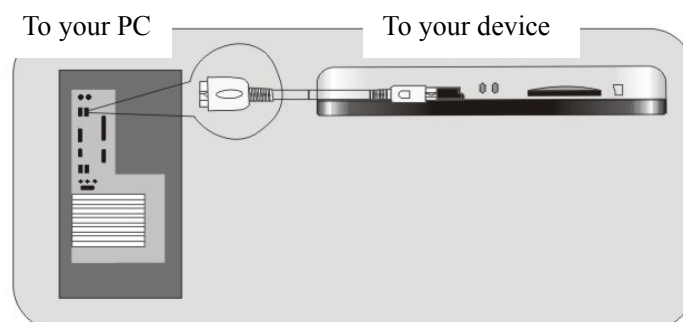
## Interfaces and keys



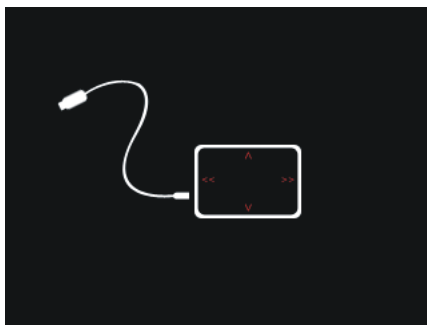
## Connecting and charging your device

### Connecting your device

Follow the figure below to connect both ends of the USB cable to corresponding interfaces. Upon connection, pay attention to the difference among these ends.



No matter whether your device is switched on or off, you can connect your device to a computer. After connection, the built-in battery in your device will be charged.



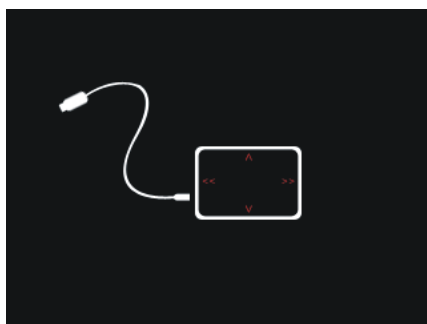
Upon connecting to the computer for the first time, the system will show a message about finding new hardware. After the system installs the driver automatically, you can find “Removable Disk” in My Computer (If your computer can not identify the player, install the driver in the provided CD manually.) Then, you can transfer files between your player and computer while the former will display the following information

### **Charging your device**

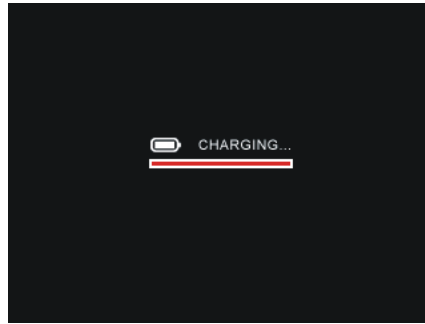
This player has a built-in battery. Upon the initial use, you may fail to switch it on due to low electricity. In this condition, charge it in time.

#### **Charge details:**

1. Connect your device to a computer with the USB cable. Then, the computer starts to charge your device automatically. At this time, your device remains connected (as shown in the figure below) and is able to read or store files.

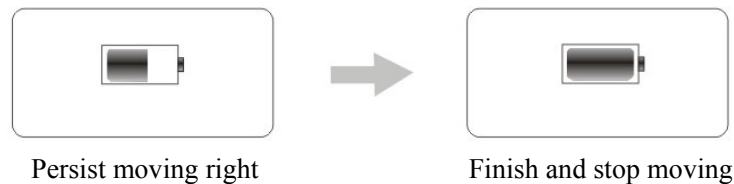


2. Connect your device to a computer with the USB cable and safely remove your device from the computer with the cable still connected. Then, the computer remains charging your device automatically. At this time, your device enters in a complete charging mode (as shown in the figure below). In this condition, you can press any key to switch on your device and performs normal operation during charging. These operations may prolong the charging time.



## Charging status

During charging, you will find the charging status shown at the bottom left on your device. After charging, you can find another status shown at the bottom right on your device. Then, you can remove your device from the computer to stop charging.



- It is suggested to continue to charge your device for 30 minutes after the battery indicator stops scrolling and displays full to ensure a complete charging.
- Generally the whole charge process needs 4~7 hours. To activate the battery for longer service life, charge the battery for 12 hours upon the first three times. During charging, your device may become warm. This is normal and would not damage your device.
- If the power adapter that you bought meets the specification for electrical appliances and applies to this player, you can use this adapter to charge your device. In this condition, the status and operation of your device is similar to that of Point 2 in “To charge your device”.

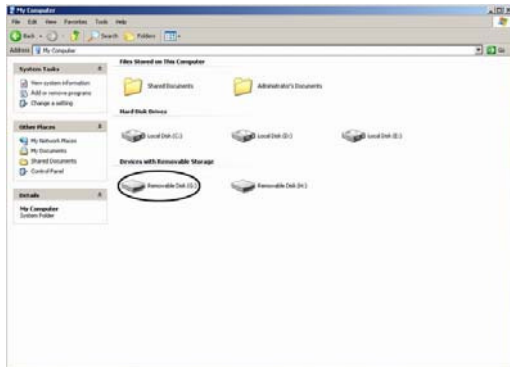
## Using Your Device as a Disk

If your device fails to work as a read/write memory during operation or you want to fast empty your device at one time, please use the Windows format tool to format your device.

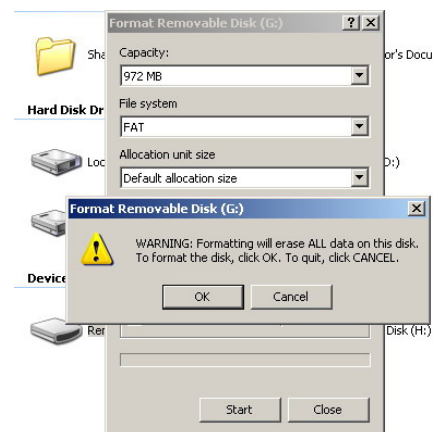
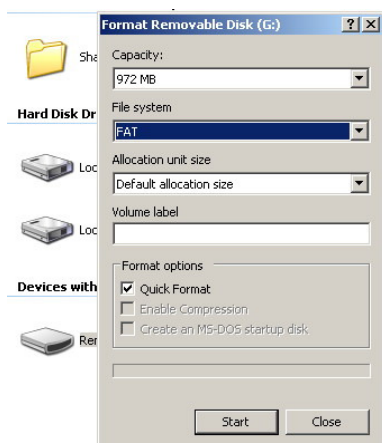
- Before formatting, please prepare as following points
  - Connect your device to a computer properly. Refer to Page 8 for details.
  - Backup all the important files in the player.

## Format Details:

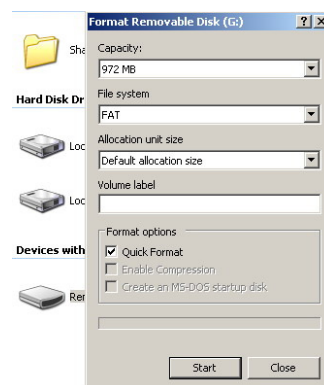
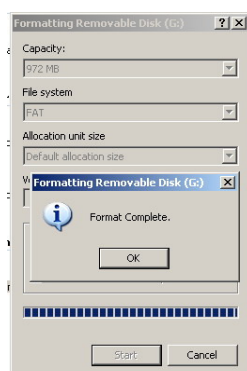
1. Find “Removable Disk” in “my computer”.
2. Right-click “Removable Disk” to pop up the pull down menu and then select Format



3. Click “start” button in pop-up format dialog.
4. Click “OK” button in pop-up warning dialog.



5. Wait until the computer finishes formatting and Click OK in the pop-up dialog box showing “Formatting finished” to confirm completion.
6. Click “close” button in format dialog box to exit formatting tool.



- All the files in player can not be recovered. after formatting.

- The option “Fast format” in step 3 allows a higher formatting speed.
- Be careful with this operation, because it may damage your device to some extent.

## Transferring files

First, connect your device to a computer properly (Refer to Page 8 for more information) and find “Removable Storage Device” in My Computer. You can use this device as a common computer drive to perform all normal corresponding operations, including copying, pasting, cutting, renaming and creating a file or something else.

- Store the files supported by your device at any place in the Removable Storage Device as you like. Then, you can play or view them after switching on your device.
- You may store files in any format in this disk. However, the file may not be identified by your device during operation if it is not supported.
- The files in your device will be arranged basing on the time sequence when they are stored.
- Your device may be affected by computer viruses. Please perform computer virus checks during operation

## Removing your device from a computer safely

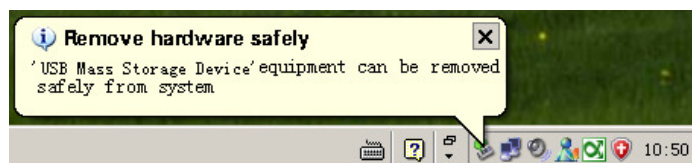
- Store files and remove your device from a computer

After finishing all operations with your device, perform the following steps to remove your device from the computer safely:

1. Click the Safely Remove Hardware icon  in the taskbar at the bottom right corner.



2. Upon the appearance of the pop-up information box as shown below, click it.



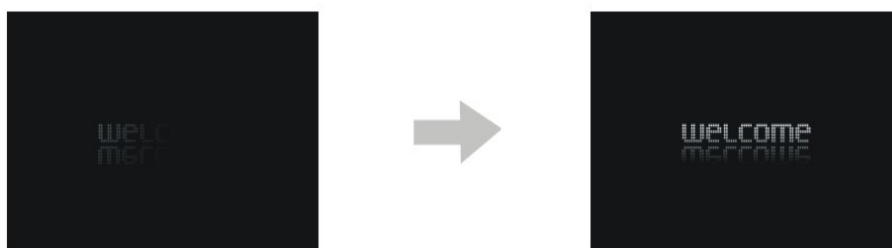
3. Wait until a Safely Remove Hardware message is displayed. Then, remove the player.

- Remove your device from the computer after performing all corresponding operations with the Safely Remove Hardware window.
- If a message “The device ‘Generic Volume’ cannot be stopped right now” appears upon the second step, it does not indicate a malfunction of your device. You can wait for a while to remove your device.
- To ensure the safety of all files stored in your device, please perform the above steps strictly before removing it from the computer.

## Switching on/off your device

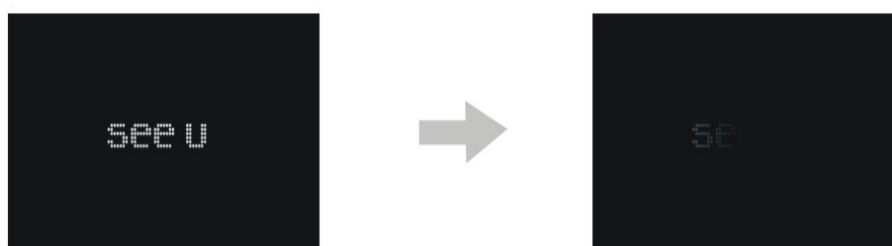
### To switch on your device

Switch the power key to **I** position, then press ► key till the boot-strap picture appears and the player is running .as the following picture.



### Switch Off

After your device is switched on, you can press and hold the ► key in any mode to pop up the following switch-off interfaces indicating that your device is being powered off. In this condition, your device will automatically save your changes towards settings.



- When the electricity is too low, the player will switch off automatically following the above step.
- It is strongly suggested to switch the power key to the “o” side to preserve the battery electricity at maximum if you will not use your device within a certain period.

### To power off your device by force

After your device is switch on, you can directly switch the power key to the “o” side to power off your device by force. In this condition, your device may not save your changes towards the settings.

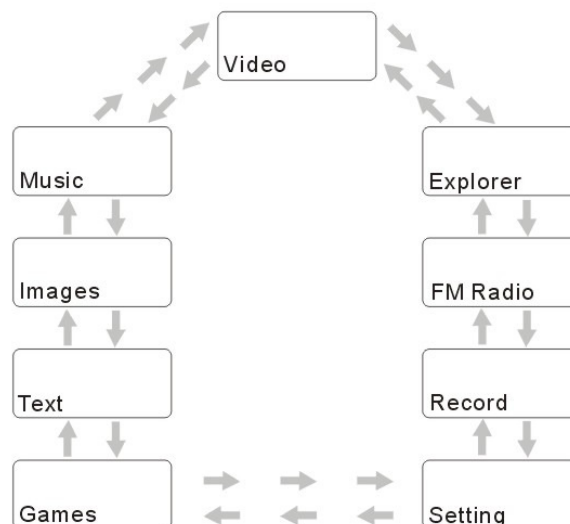
- Unless your player malfunctions, do not shut down your device by force in this way.
- If your device has a large capacity or many files stored inside, it may be turned on or off slowly. This is normal. Please wait patiently.

## Main menu interface

Upon switch-on, the player will enter main menu interface as follows



Press **▲/▼** key to switch among the following 9 function modes. To fast jump to an option for choosing, press and hold the same key.



After choosing your required mode, press **►** key for confirmation to enter the submenu.



## Video

After choosing “VIDEO” in the main menu, press ► key to access the video file list under the corresponding directory. Press ▲/▼ key to select the corresponding file, then press ► key to play a video file, Below shows the play interface:

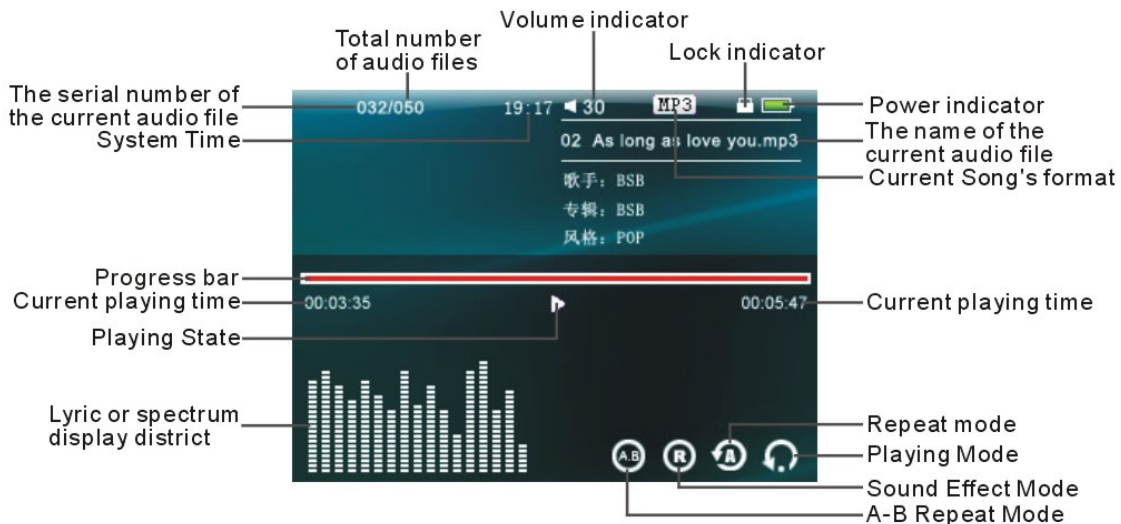


### Operation as follows:

1. Press ► key to pause , press it again to continue playing.
  2. Press <</>> key to choose and play previous or next video.
  3. Press and hold <</>> key for fast forward or fast rewind operation until your device starts to play the next video file.
  4. Press ▲/▼ key to increase or decrease volume, For fast volume adjustment, press and hold the same key.
  5. To return to the video file list, press ↶ key for operations of the list, refer to that of “File Manager”. To return to the main interface, press and hold the same key.
- The top/bottom video status bar disappears if there is no operation towards it within 5 seconds.
  - This player support AVI/ RM/ RMVB video format, but can only support the resolution under the 720\*480 video files, the resolution is bigger then the downloading time is longer , if the resolution is out of the support range , then need to convert the video file.
  - You also can login in “Video Storm” in web net, in which you can share and discuss with the cyber-mates for the video resources .

## Audio player

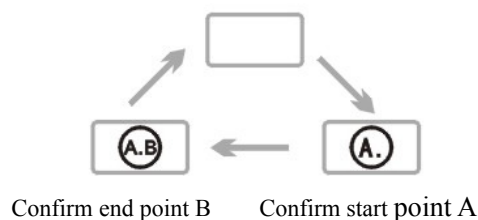
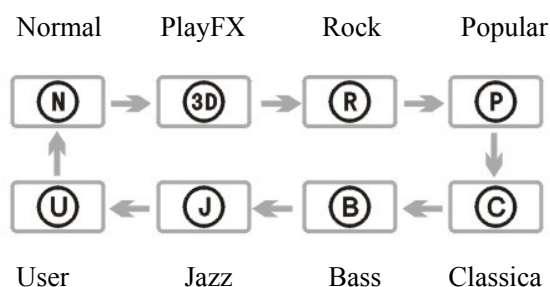
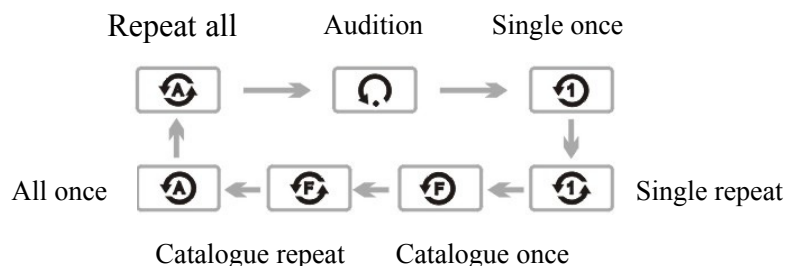
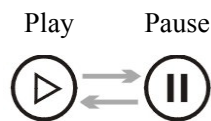
After choose “MUSIC” In the main menu interface, press ► key to enter the media file, then press ▲/▼ key to select the file, press ► key to enter and confirm the selection, then press ► key to play, the music interface as the following picture:



## Operation as follows:

1. Press ► key to pause and press the same key again to continue .
2. Press <</>> key to choose pervious or next song and play.
3. During playing, press and hold <</>> key to speed up or quickly back the current song, till the next song begins
4. Press ▲/▼ key to increase or decrease volume, press and hold can quickly adjust.
5. You can press << and >> at the same time to enter the A-B replay mode while setting the start point A. Press the keys again to set the end point B, and now you activate the replay function. Upon pressing the key for the third time, you will quit the replay function and return to normal play mode.
6. Press ↻ key to enter video setting menu, at this time can repeat set, play set ,Playmix , effect mode set , my effect mode set and display set , press ► key to confirm the setting or enter the submenu, press ↻ key to exit the setting or back to the superior menu.
7. Press ↻ key to back to the music listed files , the operation of the music listed files is the same as Explorer”, press again to back to the superior menu till to the main menu interface.

## Screen displayed icons



## My EQ Setting

“My EQ Setting” interface as the right picture, this interface has 50db, 200db, 1Kdb, 3Kdb, 10Kdb five frequency, there are seven levels for your reference , press  $\ll / \gg$  key to choose between these frequencies (including “Confirm”, “ Cancel”), press  $\wedge / \vee$  key to adjust the frequency points up/ downs between your chosen frequency, after finished the setting, please choose “Confirm” and press  $\blacktriangleright$  key , if you want to exit the setting , please choose “Cancel” and press  $\blacktriangleright$  key.



- Player just identify LRC format text , you can get it from network and use correlative software to edit it.
- The name of LRC format lyric text must be the same as song file, and stored under the same catalogue, then it can be identified and used.
- You can set the order of song files.

## Image viewer

After choose “ IMAGES” In the main menu interface, then press  $\blacktriangleright$  key to enter the picture listed file, as the following pictures:

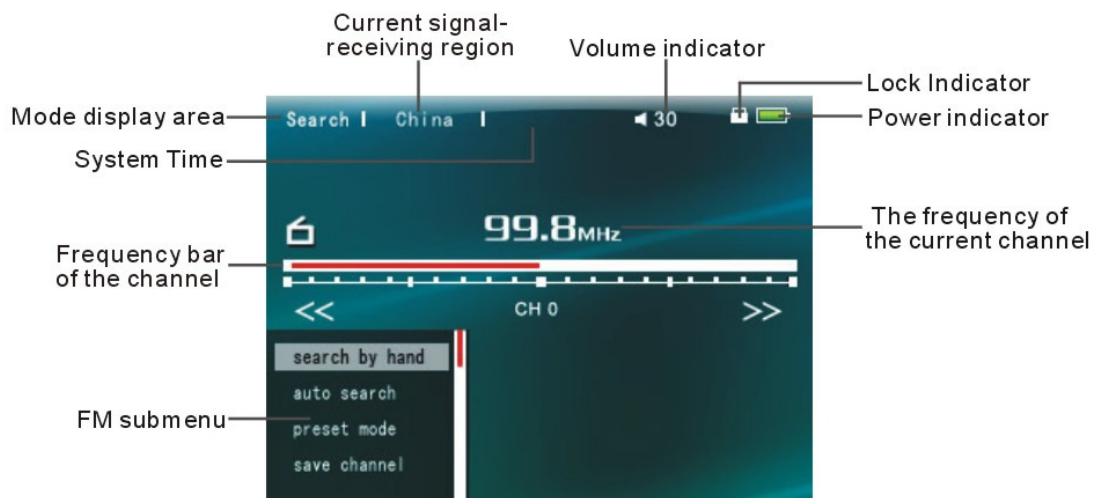


### Operation as follows:






1. Press  $\wedge/\vee$  key to select the picture in the picture listed files. press  $\blacktriangleright$  key to browse the selected picture.
2. Press  $\ll/\gg$  key is to browse previous or next picture during browsing picture.
3. Press and hold  $\curvearrowright$  key to start up the browsing function to set the submenu. At this time , you can levorotation ,dextrorotation, magnify, lessen and browsing setting, choose the one that needs to set, then press  $\blacktriangleright$  key to confirm, press  $\curvearrowright$  key to exit the picture browsing setting.
4. Press  $\curvearrowright$  key to back to the picture listed files till to the main menu interface.

### My FM

After choose “FM RADIO” in the main menu interface, then press  $\blacktriangleright$  key to enter the FM interface, As the following picture (Please slot your stereo earphone when you use the FM ).



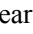
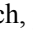
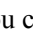



### **Submenu:**

You can press and hold  key in the radio interface to pop up the submenu on the left of the screen. In the submenu, you can press / key to choose an option upwards or downwards. For confirmation, press  key, To quit the submenu, press  key.

### **Searching and saving a channel**

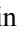


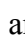
#### **1. Manual (Semi-automatic) search:**

After selecting Manual Search in the submenu, you can perform manual search or semi-automatic search. for manual search, press / key to search the signal frequency by frequency backwards or forwards. for semi-automatic search, press and hold / key for 1 second and release the key. Then, your device starts to search a signal leftwards or rightwards and won't stop until an available signal is found. During search, you can press / key to stop.

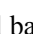

#### **2. Auto search:**

To perform auto search, select Auto Search in the submenu. Then, your device starts to search all channels in the available frequency band and will save the searched channels automatically. Upon completion, you will return to the preset mode.


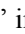
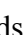
### **To save an available channel that is searched in manual or semi-automatic mode:**

Select "Save the Channel" in the submenu and press / key to set the number for the storage place. then press  key to confirm and execute the operation. ( press  key to get back to FM interface during the saving)

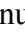

### **To tune in a channel you have stored:**

Select "Preset Mode" in the submenu to tune in all channels you have stored. In this case, you can press / key to select a channel backwards or forwards.


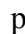

### **To delete a channel you have stored:**

No matter in manual or preset mode, you can do the following steps to delete a channel you have stored: select "Delete the Channel" in the submenu, press / key to select the number of the channel to be deleted upwards or downwards, Then press  key to confirm and execute the operation.

### **To adjust the volume:**

Whatever under the manual mode or pre-settings mode, press / key to increase or decrease volume, For fast adjustment, press and hold the same key.

### **FM recorder**

Choose the FM Submenu, press / key to select "FM Record" then press  key to enter the FM pre-recording interface,( as the right side picture), method and operation of

recording is the same as “my recording” interface, press ↶ key under the FM recording interface to get back to FM interface.

### Exit FM interface

Under the FM Mode, press ↶ key to back to the main menu interface

- Please plug stereo earphone before using FM Function.
- Upon accessing the interface of My FM, you device will enter the mode (Manual/Preset) you quit last time by default.
- You can activate or deactivate the stereo feature.
- Your device supports regional bands.

### Record

After choose “RECORD” in the main interface, then press ▶ key to enter the pre-record interface, as the following picture:



### To Record

When ready for recording, press ▶ key to start. At this time, you can find the message “Recording” in the status bar. To pause during recording, press ▶ key, To resume, press it again.

### Record Setting

In the state of “pre-recording” , press and hold ↶ key to pop up the record setting submenu, at this time you can set the record quality, record volume and desk. press ↶ key to back to the superior menu till exit the record setting submenu.

### Save recording:

In recording state , press ↶ key to pop up a save recording dialogue , select “save” then press ► key to confirm and save, then back to the pre-recording interface. Recording file will be saved as REC\*\*\*\*.WAV( \*\*\*\*stands for 0001~9999) or FM \*\*\*\*\*. WAV, and be saved in the Voice, or FM folder which is under the local disk root directory. You can view, delete and play it in File Manager or the music listed files.

### To quit the interface of Recorder

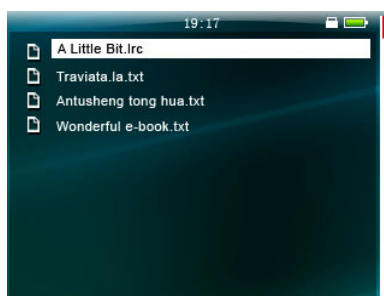
Press ↶ key to quit.

- If your device has a large capacity or many files stored inside, it may take a longer time for saving. This is normal. Please wait patiently after performing saving.
- When you use the MIC REC record, please make your microphone at right place of the record source.
- The recording quality can be set. A higher recording quality requires a relatively larger capacity.

### Text

After choose “TEXT” in the main menu interface, then press ► key to enter the listed files, as the following picture:

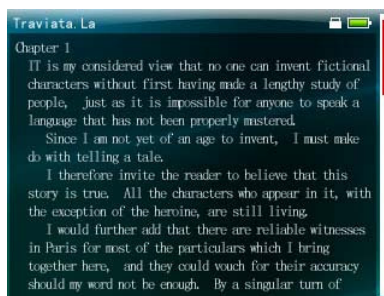
In the listed files , press ▲/▼ key to choose the files upwards / downwards, press ► key to confirm the selection and browse the file.( as the up picture)



Press <</>> key to turn over forward or backward during browsing, press ▲/▼ key to forward or backward turn rows during browsing, press and hold to quick turn rows. Under the file browsing state, press and hold the ↶ key to enter the file browsing and submenu setting, at this time you can turn over page, save the bookmark, pop up the bookmark, delete the bookmark, the font size, the font color, browse model, automatically turn over, and the style



choose. Choose the one that you want to set, then press ► key to confirm, press ↶ key to exit this browsing function



## Browsing Settings

### Skip

In the skip settings, press ▲/▼ key to select the page that you want to skip to, then press ► key to browse your setting page.

### Save bookmark

In the save bookmark interface, press ▲/▼ key to select the bookmark serial No., then press ► key to confirm the save, you can save 8 bookmarks at most.

### Pick up the bookmark

In the pick up bookmark interface, press ▲/▼ key to select the bookmark, then press ► key to confirm and back to the bookmark interface.

### Delete Bookmark

Press ▲/▼ key to select the bookmark, then press ► key to confirm.

### Font Size

In the font size setting, press ▲/▼ key to select the font size, then press ► key to confirm. There are big, middle, small types fonts.

### Font Color

In the font color settings, press ▲/▼ key to select the color, then press ► key to confirm. There are white, green, red three colors to choose.

### Browsing Mode

In the browsing mode settings, press ▲/▼ key to select the browse mode, then press ► key to confirm. There are automatic mode and hand setting mode for your reference.

### Turn over automatically

In the automatically turn over settings, press ▲/▼ key to set the automatically turn over time, then press ► key to confirm. There are 10s, 15s, 20s, 25s, 30s for your reference.

### Style Choose

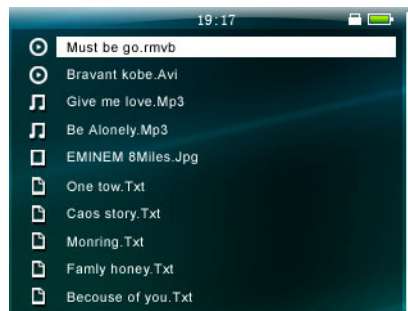


In the style choose settings, press  $\wedge/\vee$  key to select the style, then press  $\blacktriangleright$  key to confirm. There are style one, style two, style three for your reference.

During browsing , press  $\curvearrowright$  key to back to the listed files, the operation of the listed files are the same as the “EXPLORER”.

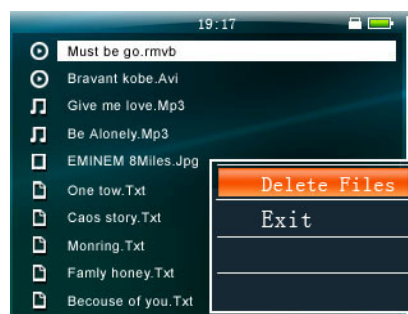
## Explorer

After choose “EXPLORER” in the main menu interface, then press  $\blacktriangleright$  key to enter the explorer interface, as the following picture:



### Operation as following :

1. Press  $\wedge/\vee$  key to select file or folder upwards or downwards.
2. Press  $\blacktriangleright$  key to enter the selected folder or open the selected file directly.
3. Press  $\curvearrowright$  key to back to the superior folder till to the main menu interface.
4. Delete the file: select the file, press and hold  $\lll$  key to pop up the delete dialogue, ( as the following picture), press  $\wedge/\vee$  key to select the “Delete” or “ Exit”, then press  $\blacktriangleright$  key to execute the selection, during the delete selection , press  $\curvearrowright$  key to exit the delete dialogue.



- The folder can't be deleted.
- Folders are arranged in front of files by default in the explore.

## Game and Setting

### Game

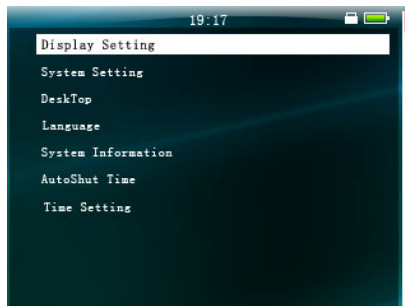
After choose “GAMES” in the main menu interface, then press ► key to enter the game interface, as the following picture:



Press ▲/▼ / <</>> key to select the game name, then press ► key to enter the game, the game method please reference to the manual of the attached disk.

### Settings

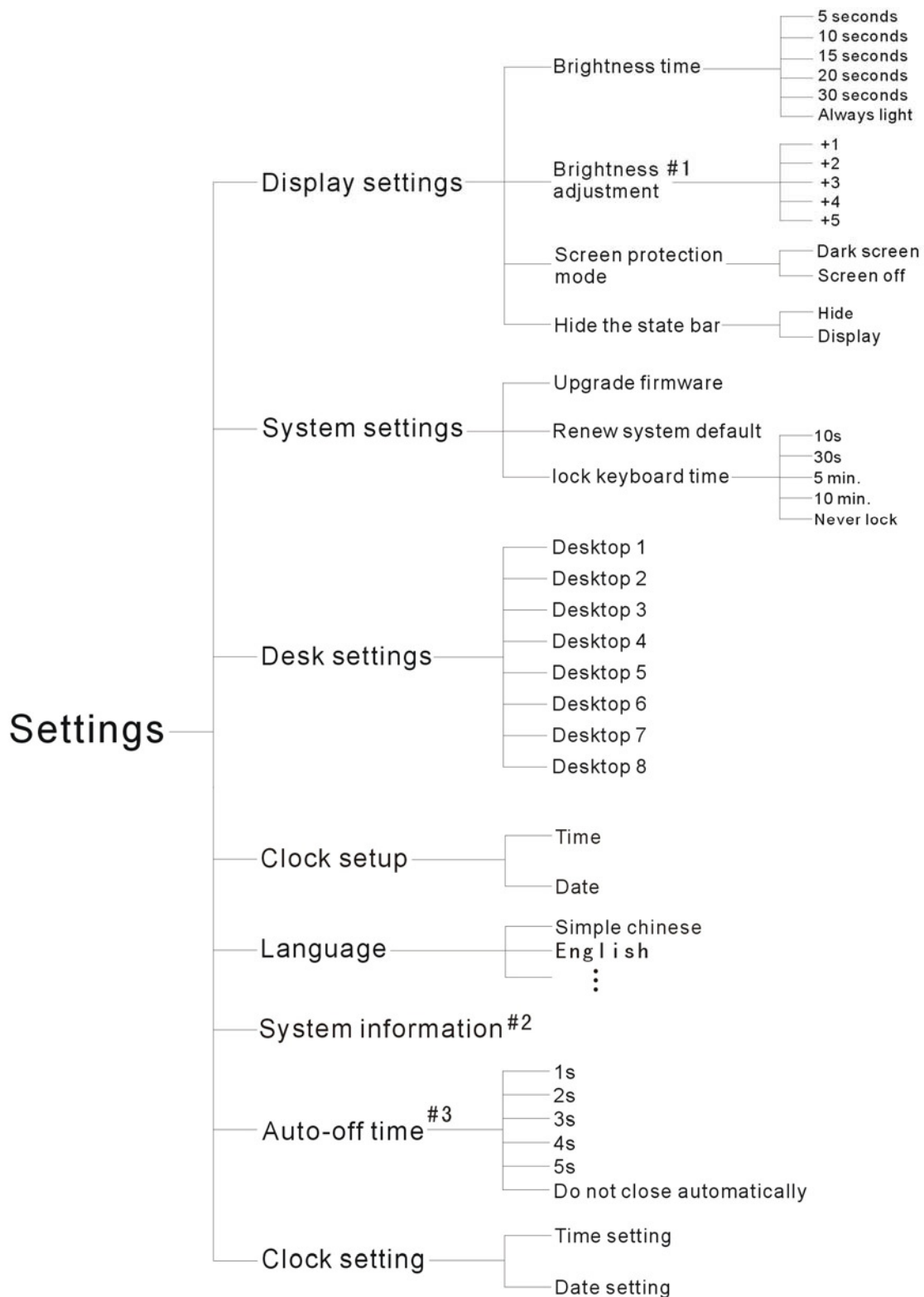
After choose “SETTING” In the main menu interface, then press ► key to enter the setting interface, as the following picture:



### Operation as following

1. Press ▲/▼ key to move upwards or downwards .
2. Press ► key to enter the next submenu or confirm the selection.
3. Press ↶ key to back to the superior menu till to the main menu interface or give up the selection.

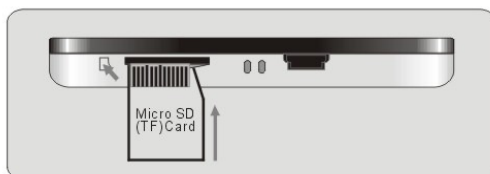
**For the menu structure of settings, see the next two pages:**



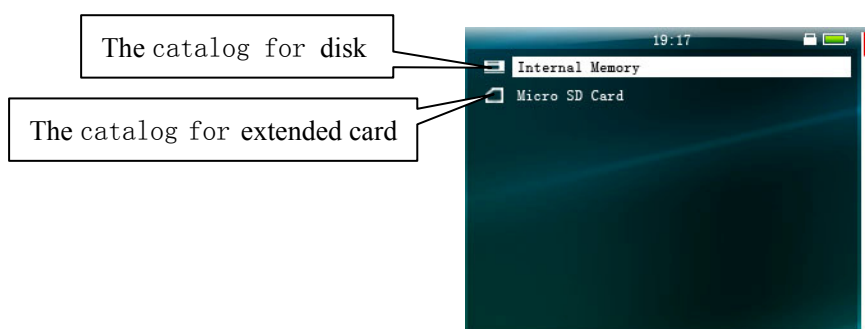
- #1. Brightness adjust : “1” refers to the highest brightness . “5” refers to the lowest brightness. ( the screen bright display level is the inverse ration to the standby time.)
- #2. After choose “ System information”, then you can check all of the player information.
- #3. “close time” is to close the player automatically in a fixed time which you have set before.

## Using your expansion card

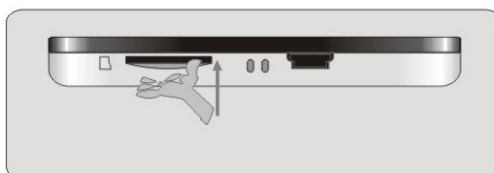
1. Insert the expansion card according to the arrow direction shown in the figure. Note that the notch part should be kept on the right while the metal contact upwards.



2. After properly inserting the expansion card, you can find the following directory in File Manager or other file lists. Now, your device can read or perform operations towards the files or folders stored in the card.



3. To take out the card, press the card in the slot with a slight force as shown in the figure below to eject one part of the card from the slot.



- Your device supports the micro SD card with a maximum capacity of 2GB.
- Hot-swap of a micro SD card is supported.


## Other Operations

### ● Using the mini speaker

Upon removing the stereo earphone, the mini speaker is activated, and vice versa. Your device applies a special mini speaker, so it is only applicable for relatively quiet environment.

- **Using the lock key**

In any interface, you can press both - and ► key to activate the key lock function.

Then, you can find the  icon to the left of power indicator. This indicates that all keys are locked from operation. To unlock it, press both keys at the same time again. Now all keys are operable.

- **Meanings of disk directory**

The “Internal Memory” and “Micro SD Card” you found in explorer file lists refer to the directory of your device and the directory of your expansion card working as a disk respectively.

- **Application of your device and expansion card**







Your device and expansion card cannot be read or applied as a disk at the same time. Upon entering into one disk directory to operate a file, all operations towards the other disk will be quitted automatically and immediately.

- **Deactivating the screen saver**


After your device enters the screen saver mode, you can press any key once to quit this mode for other normal operations.






## Function of keys

### Video player







Keys	State	Short Press	Long Press
	Play	Pause	Off
	pause	Play	Off
	Play or pause	Play the former song	Fast backward the video
	Play or pause	Play the next song	Fast forward the video
	Play or pause	Increase volume	Increase volume fast
	Play or pause	Decrease volume	Decrease volume fast
	Play or pause	To the folder	

### Audio player

Keys	State	Short Press	Long Press	Simultaneously press to	Simultaneously press and hold to
	Play	pause	off		

	Pause	Play	Off		
	Play	Play the former song	Fast backward the song	Switch the repeat model	Switch the volume model
	Pause	Choose the former	No response		
	Play	Play the next song	Fast forward the song	To the repeating mode	Handoff lyrics and spectrum
	Pause	Choose the next song	No response		
	Play or pause	↑volume	Increase the volume		
	Play or pause	↓volume	Decrease the volume		
	Play or pause	To the file content	Pick out the music setting menu		

### Image viewer

Keys	State	Short press	Long press
	Picture listed files	/	Switch off
	Picture listed files	Back to the superior file	
	Picture browsing	Choose the former picture	
	Picture listed files	Choose and browse picture	
	Picture browsing	Choose the next picture	
	Picture listed files	Choose and browse the last picture	Continue to choose the last picture
	Picture listed files	Choose the next picture	Continue to choose the next picture
	Picture listed files	Back to the main menu	
	Picture browsing	Back to the list of picture files	Back to the submenu setting

### My FM

Keys	State	Short press	Long press	Simultane
------	-------	-------------	------------	-----------



				ously press and hold to
▶	Hand search or pre-settings mode	/	Off	/
◀	Hand search	frequency search from the left	Semi-automatic search from the left	
	Pre-settings mode	Choose the channel forward		
▶	Hand search	frequency search from the right	Semi-automatic search from the right	
	Pre-settings mode	Choose the channel backward		
^	Hand search or pre-settings mode	Increase volume	Continue to add the volume t	
v	Hand search or pre-settings mode	Decrease volume	Continue to decrease the volume	
↶	Hand search or pre-settings mode	Back to the main menu	Pick out the FM submenu	

### Recorder

Keys	State	Short press	Long press
▶	Preparation for record	Start/continue recording	off
↶	Preparation for record	Back to the main menu	
	recording	Pop up the save record dialogue	







### My text

Keys	State	Short press	Long press
▶	Text listed files	Browse the chosen text	Off
◀	Text listed files	/	Pop up the delete dialogue
	Text browsing	Choose the former text	Pop up the save bookmark dialogue
▶	Text browsing	/	
	Text listed files	Page down	Pop up the save bookmark dialogue
^	Text browsing	Page on	Continue to page on
	Text listed files	Choose the last file	Continue to choose the last file


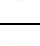
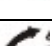

	Text browsing	Page down	Continue to page down
	Text listed files	Select the file	Continue to select the file
	Text browsing	Back to the listed files interface	Pick out the listed file submenu setting

### My Games





(Take “Russia Bricks as an example, methods for other game please refer to “My Game” of clients’ manual).

Keys	State	Short press	Long press
	pause	Pause	off
	Play	pause	
	Play	Shift left	Continue to move left
	Play	Shift right	Continue to move right
	Play	Clockwise rotation	/
	Play	Accelerate degradation	/
	Play	directly go to the bottom/ continue the game	Back to the main menu

### Explorer

Keys	Short press	Long press
	upwards	Continue upward
	downwards	Continue downwards
		Pick out the delete dialogue box
		Go back to the main menu

### My Setting :

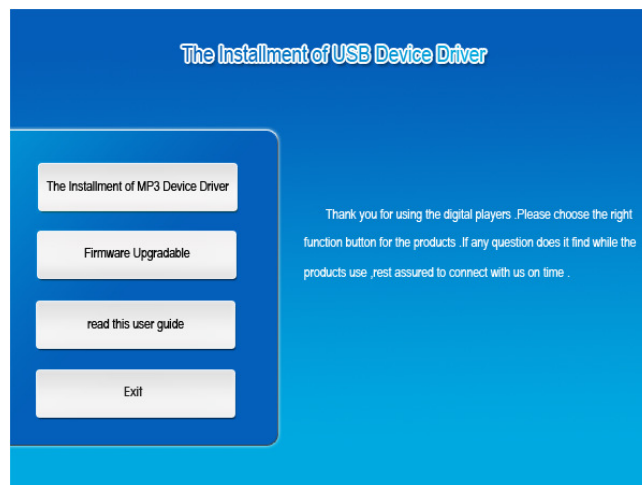
Keys	Short press	Long press
	Enter into the setting menu or confirm the setting	Power off
	Back to the superior menu till to the main menu interface	/
	upwards	Continue to upwards
	downwards	Continue to downwards



## Auxiliary Software

### Introduction to the CD

Open the package and you can find a CD provided with your player. This disc contains multiple software tools and many documents. Please keep it properly. Put it into the CD-ROM of your computer, and you can find the following pop-up window on the computer screen:



- If this interface does not pop up automatically when the disc is put into the CD driver, please execute the “Autorun.bat” file in the disc.

**You can find the following items in the CD-ROM:**

---- USB drivers

---- Firmware Update

---- Read User Manual

---- Exit

### Install Driver (for Windows 98)

1. Put the driver CD provided with your device into the CD driver of your computer. In Windows 98 OS, an installation interface pops up automatically.
2. Click “Win98 USB Driver Files”, then double-click “U98Settings.exe” in the pop-up

window, Then, the system starts to install the USB driver for your player.

3. Connect the player with the USB interface of PC, PC will present a new hardware is found, and Add New Hardware Wizard” will appear as follows:
4. Click <Next> to select a route to install the driver, as shown below:
5. Click “browse” button, select “G:\Win98 USB Driver Files\HACHA-PC18 USB DRIVER for Win98 v1.0” from the “browse files” dialogue frame as follows:
6. Click “confirm”, and click “next step” button, a dialogue frame will appear as follows:
7. Select “Some -other Driver” and click “View list”, as following picture:
8. Select “USB Mass storage Device” from “select other drier” dialogue frame to confirm going back to Add New Hardware Wizard”” dialogue frame.
9. Click “next step” in the above dialogue frame.
10. The Win98 operating system has been installed after clicking “Finish” button.

Upon completion, you can use all functions of the player like operating it in other operating systems advanced to Windows 98.

## **Methods of Upgrading Firmware**

### ● What is player firmware?

It is a program to control the hardware and allows you to perform many functions of the hardware. In addition, updating the firmware can improve the function of the product and repair the program problem. The postfix of the firmware is “.rfw”.

### ● To update the player firmware

The updating of all firmware aims to improve the product performance. The company will issue firmware update service continuously for free in order to help you operate the product with more ease. All data stored in the player disk will be cleared upon updating. Please backup them properly before updating the firmware.

### ● To Get Player Firmware

Perform the following one steps:

1. To get the firmware provided with your player, open the CD and click “Firmware File” as shown on introduction to the CD

.

The firmware update is used to enhance and improve the performance of your device. However, the normal work would not be affected without updates.

The firmware update may cause your device to malfunction due to improper operation. It is suggested not to update the firmware unless your device fails to work.

Read this user manual carefully before operation. The firmware for this player does not apply to other types of players by other manufacturers.

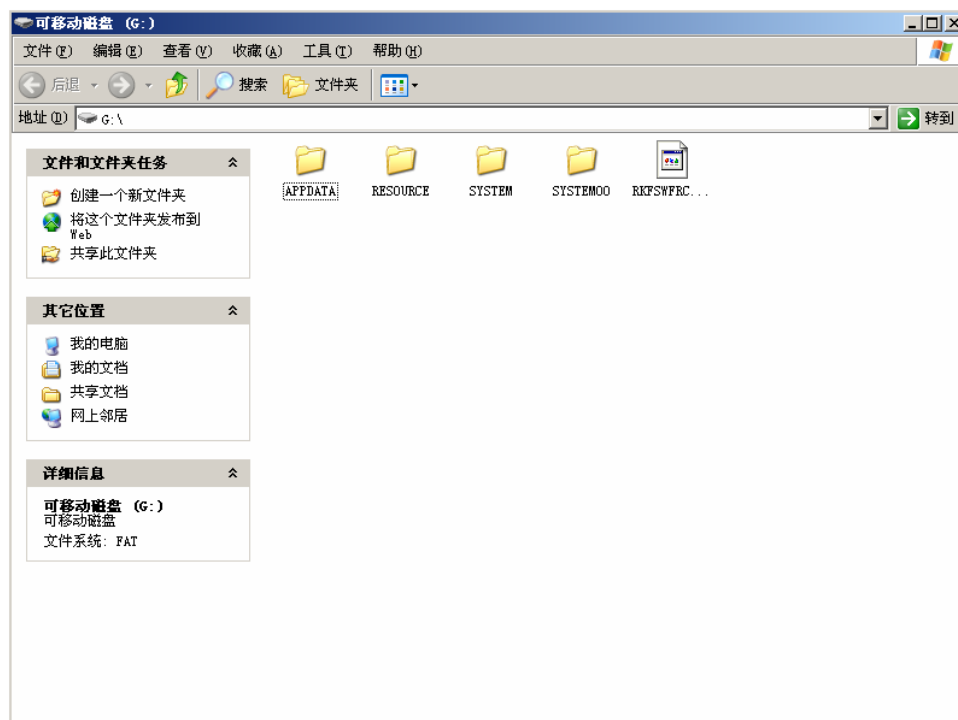
## Specific Methods for Upgrading Firmware

### Method A

Copy the “HC\_PC58.RKW” file which in the disk firmware into the player disk. Then disconnect the player, power on the player and enter [Settings] - [System Settings] - [Firmware Update], click "YES" then the player will begin to update automatically. after finished the update, restart your player you can use the new firmware.( It is suggested to delete the HC\_PC58.RKW file after update successfully ,in order to avoid wrong operation)

### Method B

1. Copy the “show\_sys.hc” file which is in the CD into the player disk, then cut the connection , connect the computer again, at this time there are three disks in the computer : System Disk., Local Disk, extended Disk. The system disk as the following picture:



2. Format the system disk, then copy all the files which in the CD firmware called "ENGLISH\_PC58\_sysrestore" file folder into the system disk. Then disconnect the computer, power off the player. when you restart it, the player will update the firmware automatically and will begin to use the new firmware system.
3. In order to manage the player disk well, after firmware updated, please connect the computer again to delete the step one [Local Disk] "show\_sys.hc" file. Then cut the connection. This time when you connect the computer again, the system disk will be hidden.

## **Supplementary constructions**

### **About Capacity**

The actual capacity of your device displayed under the OS of the computer is less than the normal capacity. Below are three reasons:

1. The carry for calculating the capacity adopted by the flash manufacturer is different from the actual conversion method.
2. The system program of your device occupies a certain disk space and preserves a certain space for upgrading.
3. Your device supports hot-swappable operation for mobile storage function. The disk partition table occupies a part of disk space.

### **Inconsistent time display for playing of audio files**

At present, for playing of many MP3 or WMA files applying VBR coding mode, different time may be displayed. This is normal.

### **About the loss of stored data or abnormity**

It is mainly caused by accidental disconnection during data transmission. Users are suggested not to disconnect the connection between your device and the computer while transferring a file or formatting your device. Because of the difference in Windows 98, Windows 2000, and Windows XP, the transmission speed may be different. In this case, it is subject to the transmission speed in play mode. You can find a mobile display of the transmission speed. When the symbol stops moving, it indicates that the transmission is finished. Please wait until the data is transferred completely before removing your device from the computer. For any abnormity, try to re-format your player disk.

## Troubleshooting

Failures	Causes and solutions
The device fails to switch on	Check whether the battery electricity is sufficient; Check whether the power switch is placed at “-”;
The device can not be charged	Check whether the USB cable is damaged; Check whether the USB cable features the original one; Check whether the power adapter conforms to the specification of your device; Check whether the USB interface on your computer malfunctions or conforms to the USB standard;
The device does not play a file	Check whether the file is damaged; Check whether the file format is supported; Format the player disk; Update the firmware again;
The system breaks down	Slide the power switch and turn on your device again; Update the firmware again;
Files can not be stored	Check whether the remained space on your device is sufficient; Format the player disk;
AVI/RM/RMVB files can not be deleted from the device or the hardware can not be removed safely	Enter the DOS command window or execute REGSVR32/USHMEDIADLL in “Start/Run” and restart your computer.
The computer can not identify the player disk	Check whether the USB cable is damaged; Check whether the USB cable features the original one; Check whether the USB interface is inserted to a standard location; Check whether the USB interface on your computer malfunctions or conforms to the USB standard; If your computer uses Windows 98 OS, check whether the driver is installed properly.

△ If your problem still remains, please connect the local dealer or visit our website to look for solutions to corresponding problems.

## Product Specification

Dimension	8.90×5.70×0.97 (cm)
Weight	56.2(g)
Screen	PMMA
Color	Black-Silver
Memory Medium	NAN FLASH
LCD screen	Style: TFT, color depth:262,000color, size:2.83inch, resolution:320×240
Transmit interface	USB Mini 5 Pin
Transmit Speed	USB 2.0 (High-Speed)
Signal to noise	90db
Distortion	<0.05%
Output Power	15mW × 2
Using Temperature	-5~40℃
Power	New Li-polymer, with an exact protection circuit
Video format	RM/RMVB/AVI (XVID code) /FLV
Audio format	MP3/WMA/WAV/APE/FLAC
Picture format	JPG/BMP/GIF
Frequency range of FM	76MHz~108MHz
Record format	WAV
Text format	TXT
support Languages	20
Support Multi-operating System	Windows XP、Windows 2000、Windows Me、Windows 98

**\*Note: design and the specification are subject to change without notice.**